

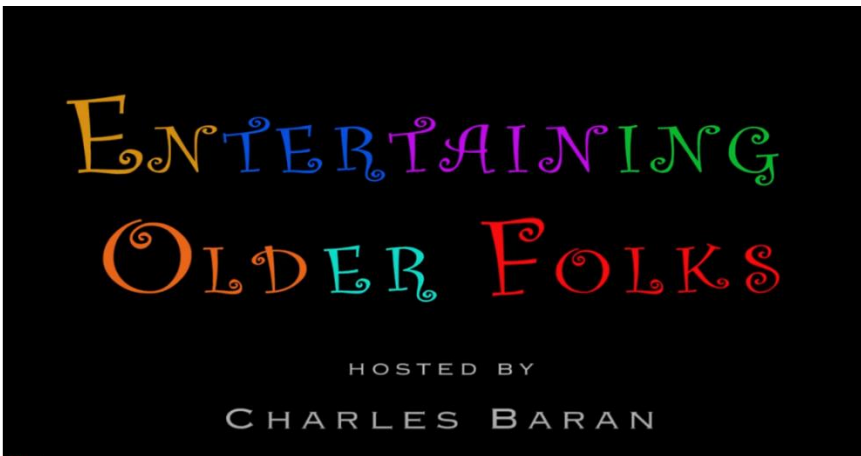
# HERITAGE POINTE

*Seniors Living in the Jewish Tradition*

## HIGHLIGHTS THIS WEEK ON CHANNEL 1961

**Sunday, August 7 at 7:00pm**

### Entertaining Older Folks



Entertaining Older Folks is a one-hour, variety-style television series with music, comedy, magic, poetry and so much more! It was created specifically for residents - but it's so fun the whole family will enjoy it!

Hosted by Charles Baran with an appearance by Herman Plushky.

Featuring Wynell Montgomerie, Philippe and Flore Berne and Mary Scholz. Special Guests include the comedy of George Aivaliotis, Bunny & Blair's Body-Mind Boutique, Myrtle's Musings plus a Rainy Day Dog Video and Poetry Toss.

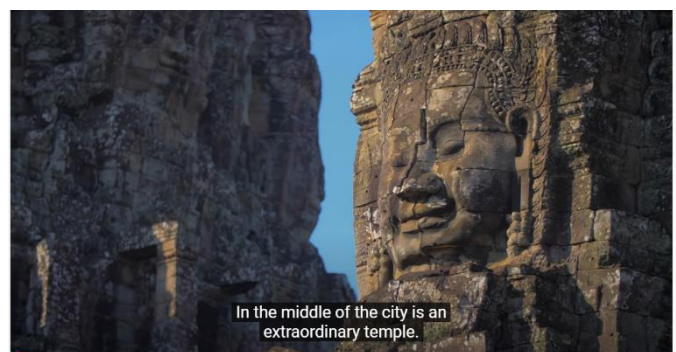
---

**Monday, August 8 at 7:00pm**

### The Khmer Empire - Fall of the God Kings

Deep in the Cambodian Jungle, a ruined city crumbles among the roots of banyan trees.

In this episode, we look at the Khmer Empire of medieval Cambodia, and the ancient mega-city of Angkor. Let's explore how this great civilization to a size and wealth virtually unprecedented in the world, how it overcame the challenges of its climate and landscape, and all the factors that led to its final, dramatic collapse.



rose

**Tuesday, August 9 at 7:00pm**

**Rufus Wainwright and  
Molly Ringwald:  
Judy Garland at 100**



*Recorded June 9, 2022 at 92nd Street Y, New York*

Judy Garland was a legend. But her legacy goes beyond film and music. Join Grammy-nominated singer-songwriter Rufus Wainwright with acclaimed actress Molly Ringwald as they talk to Jordan Roth about the many sides of Judy Garland — her dazzling and iconic performances, her ongoing influence on American culture at large, and how she’s inspiring a new generation of artists and performers — on what would have been her centennial birthday. In a new album and a series of performances in June at New York’s City Winery, Wainwright faithfully recreates Garland’s legendary 1961 comeback show and debut at Carnegie Hall. Hear him with Ringwald as they discuss the significance of that concert; their personal connection to Garland’s work; her still-evolving legacy; how grief over her death helped to spark the gay rights movement at the Stonewall Inn in 1969; and much more.

---



**Wednesday, August 10 at 7:00pm**

**Wednesday Night Jazz  
The Kelby MacNayr Quintet  
presents Brand New Sounds**

Drummer and bandleader Kelby MacNayr composes music that is alive, stunning and pulsating with

rhythms and melodies from the jazz world and beyond!

Live jazz, without a net!

Five of the West Coast’s finest improvisers create music that is at once brand new and rooted; gossamer and earthy!

---

**Thursday, August 11 at 7:00pm**

## **An Artist's Emotional 10-Year Journey To Paint A Mysterious Woman**



Through an unconventional sequence of events, artist Robert Townsend discovers his kodachrome muse and embarks on an ambitious and emotional project that will take more than a decade to complete. The art is given new life as Robert dives deeper into Helen's story, visiting places she's been and meeting people from her life. We discover why we identify with and become charmed by this woman. Helen is our aunt, our neighbour, the woman at the grocery store, and we reveal that the precious lives that we each lead should be cherished as Robert does, with this woman he's only beginning to know.

---

**Friday, August 12 at 2:30pm**

## **ISRAEL. Villages of Galilee: Kfar Kama and Kerem Ben Zimra**

Virtual video walk in the villages of the Galilee. Beautiful Israel. Kfar Kama and Kerem Ben Zimra. Pleasant atmosphere.

This is not an "action" show...but an actual walking tour of these places and all of the sights you would see along the way. Try it and see!



**Saturday, August 13 at 7:00pm**

**Dvořák's Symphony From the New World |  
Ears Wide Open | Live  
from Melbourne Recital  
Centre**

Nicholas Bochner leads you on an orchestral journey to the New World. Bohemian folk meets sumptuous orchestral splendor in this

exploration of one of the greatest symphonic works of all time - Dvořák's Symphony No 9 - From the New World.



---

*QUESTIONS ABOUT CHANNEL 1961? CALL SHELLY AT 949.276.6227*